

Thermofix

Secure hold in insulated facades

- For installing devices and lights in insulated external facades without loss of insulation
- Quick installation by simply screwing in
- Ø 74mm milling hole
- Thermal bridge-free installation
- Can be combined with all **f-tronic®** hollow wall boxes Ø 68 mm



Thermofix

Installation sleeve



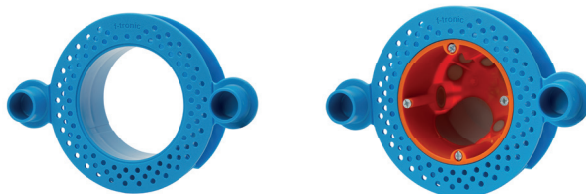
Easy installation
Without additional tools



Flexible applications
in all common insulation materials



Secure grip
thanks to high pull-out forces



Type	TF1	TF1-Set
Version	Installation sleeve	Installation sleeve-set
Item no.	7810051	7810052
SU / CB / PL	5 / 100 / 2.400	1 / 15 / 300
Milling hole	Ø 74 mm	Ø 74 mm
Depth	40 mm	62 mm
Suitable for	All common ETICS materials	All common ETICS material
Suitable for	HW boxes Ø 68mm	-
Material	PC	PC
Kit contents	-	5x Thermofix Installation sleeve TF1, 5x HW Device connection socket airtight E3700