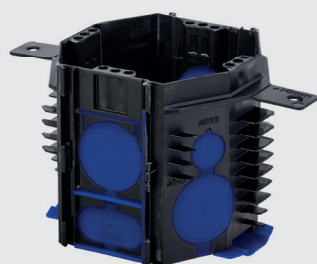




INNOVATIONS 2024



Foam instead of plaster

Simply plug it in

The ultimate innovation, our foam installation box.
For more time savings and more precise work.
Find out more on page 4.



New entries

New possibilities

The airtight flush-mounted device boxes have more
entry possibilities and enable a versatile installation.
More information on page 6.



All round optimisation

The range of hollow wall boxes is now even better

The entire range of hollow wall boxes has been revamped
and improved in terms of variability and ease of installation.
Find out more on page 7.



Innovation for timber construction

The patented TC fastening system

Special installation boxes for timber construction.
The TC fastening system makes standard-compliant
installation in timber construction possible at low expense.
Find out more on page 8 + 9.



Organised wiring

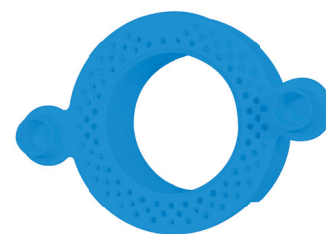
Clamp holder for NEPTUN Compact

For neat and tidy wiring in our NEPTUN Compact
damp-area distribution boxes.
Find out more on page 10.

Thermofix Installation sleeve

Secure hold in insulated facades

Never before has the installation in facade insulation been so simple and versatile. Whether in wood fibre, mineral wool or polystyrene insulation boards, Thermofix can be used flexibly. **Find out more on page 12.**



The new VISION

Made for the future

The VISION surface-mounted distribution board series has been optimised. With the new features, the surface-mounted distribution board can be flexibly adapted to the requirements of electrical installers and ensures maximum ease of installation. **Find out more on page 13.**



DC surge protection

To protect your PV installation.

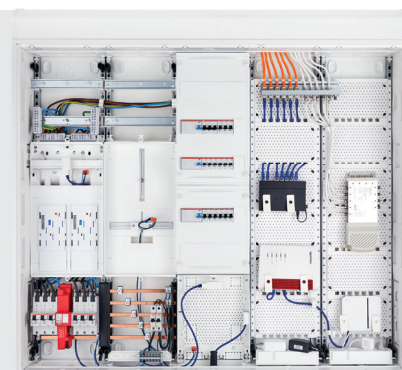
Protect your inverter and other devices on the DC side of the PV installation simply and easily. **Find out more on page 14.**



The Power Series

Progress, that counts.

In these fast-moving times, adaptability is crucial. That's why we have revised and completely modernised our entire range of meter cabinets. **Find out more on page 16.**



Meter exchange cabinets

Simply replace

The meter exchange panel with the measuring devices can be replaced at any time without switching off the system to be supplied. **More on this on page 18.**





Uiii... the new foam box

Simply plug it in. Foam instead of plaster.

- Flush-mounted installation for foaming
- No more time-consuming mixing of plaster
- Efficient foam distribution system
- Stable, airtight connection
- Convenient through-wiring
- Larger wiring space
- 3-fold screw dome
- Stepless plaster levelling



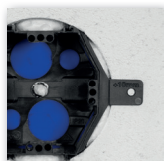
1 Airtight

The flexible membrane wraps itself airtight around the pipe or cable.



2 Distribution channel

The foam is led through the distribution channel on the back and wraps the box, providing a firmer hold.



3 Time-saving

Save valuable time thanks to fixing with conventional PU foam instead of time-consuming plasterwork.



4 3-fold screw dome

Thanks to the triple screw domes, the installed device can be easily and simply aligned in the box.



5 Plenty of installation space

The square shape of the box offers more wiring space compared to the standard flush-mounted range.



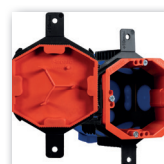
6 Multiple combination

The simple and stable click system allows multiple combinations of boxes and holds them securely together. The combination always remains airtight.



7 Simple through-wiring

Cable entry that can be broken out in stages for a simple and tidy cable guidance in the box combination.

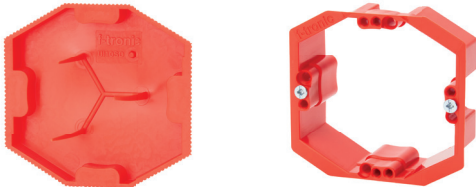


8 Accessories

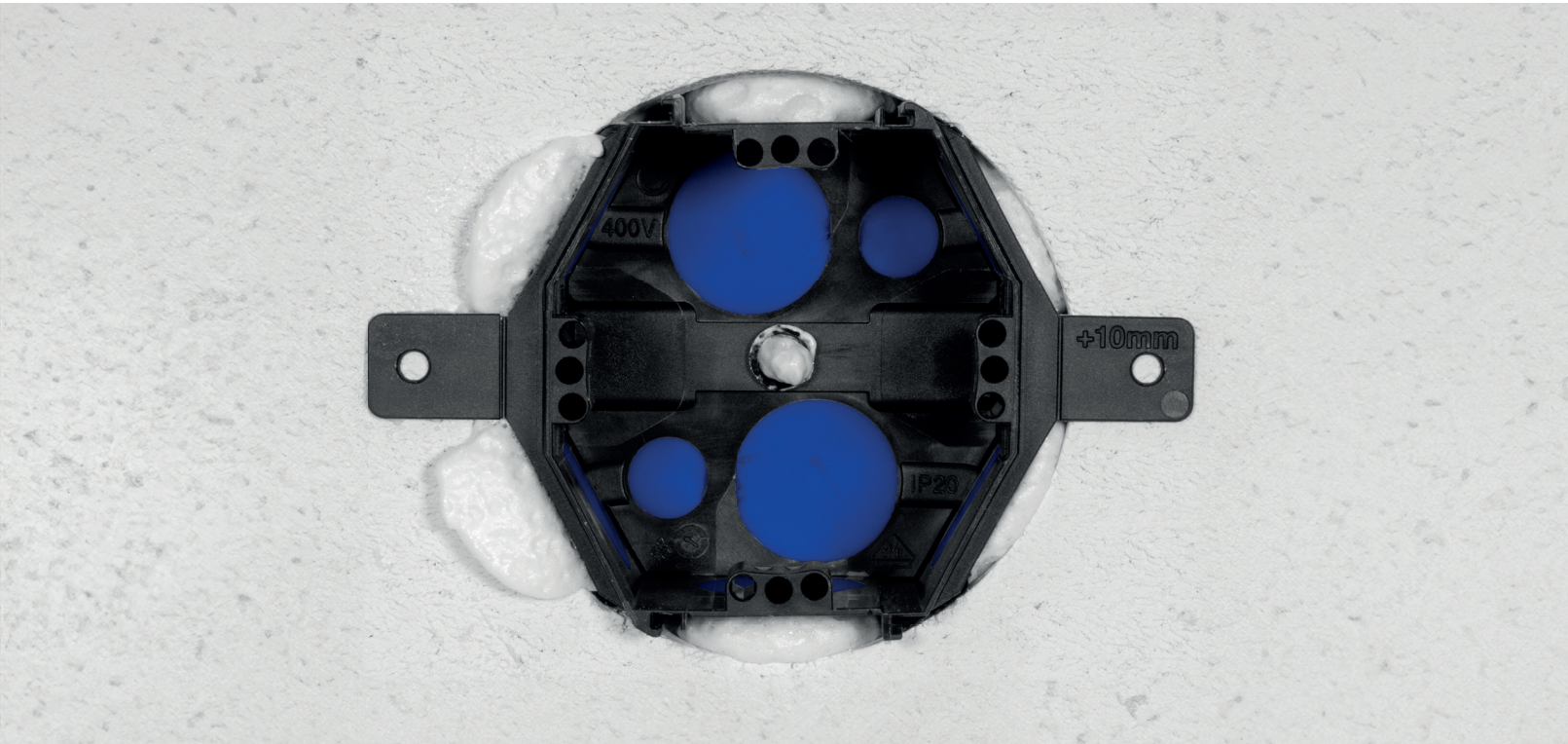
A matching signal cover and adjustable plaster levelling rings are available in the accessories range.



Type	UI10F	UI10T
Version	Device socket	Device connection socket
Item no.	7320100	7320101
SU / CB / PL	25 / - / -	25 / - / -
Diameter	Ø 82 mm	Ø 82 mm
Depth	48 mm	69 mm
max. cross-section	2,5 mm²	2,5 mm²
Material	PP / TPE	PP / TPE
Cable entry	2x ≤ Ø 12 mm	10x ≤ Ø 12 mm
Pipe entry	8x ≤ Ø 25 mm	8x ≤ Ø 25 mm



Type	UI10SD	UI10PA
Version	Signal cover	Plaster levelling
Item no.	7390151	7390152
SU / CB / PL	50 / - / -	50 / - / -
Depth	-	10 - 25 mm
Material	PE	PS
Suitable for	UI10-sockets	UI10-sockets



Efficiency in energy and handling



- Maximum airtightness thanks to the new f5 membrane (tear-resistant, flexible, airtight, pre-embossed, tool-free)
- Increase of energy efficiency in buildings
- More comfort by avoiding draughts
- Easy to install
- Easy to use without additional tools
- Guaranteed compliance with the standard distance



1 More entries

A wide range of cable and pipe cross-sections can be inserted thanks to the many lateral membrane insertion options.



2 Base entry

Additional possibility of rear insertion thanks to the additional membrane on the base of the box.



3 Labelled entries

The entries are precisely labelled for maximum ease of installation.

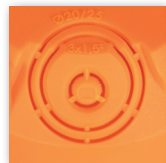
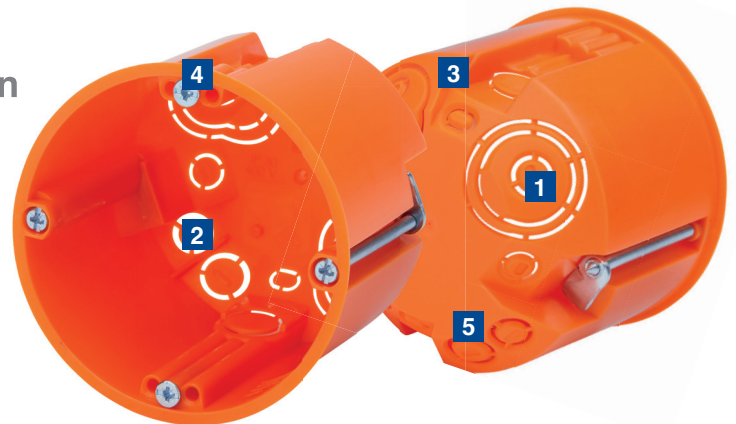


Type	E1062K	E1072K
Version	Device socket	Device connection socket
Item no.	7320026	7320028
Depth	46 mm	65 mm

The basics

for a proper hollow wall installation

- With break-outs for cables and pipes
- Integrated pipe support for NYM cables
- Secure fixing of tubes
- Combination entries up to M25



1 Combination entries

Flexible insertion of pipes and cables up to M25.



2 Diverse insertion options

Maximum flexibility during installation thanks to the many different entry options.



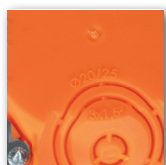
3 Easy to connect

The round connecting pieces ensure easy connection and through-wiring from socket to socket.



4 Perfect alignment




Thanks to the 3-fold screw domes, the installed device in the box can be aligned easily and simply.



5 Labelled entries

For labelling the exact cable cross-sections and pipe diameters that can be inserted.



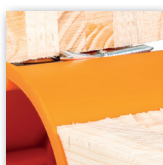
Type	E115	 E115HF	E117	 E117HF	E135	 E118HF
Version	Device socket	Device socket, halogen-free	Device connection socket	Device connection socket, halogen-free	Device socket, extra flat	Double device socket, halogen-free
Item no.	7350163	7350164	7350165	7350166	7350167	7350162
Depth	48 mm	48 mm	62 mm	62 mm	35 mm	47 mm

Grips tightly

Stays in the wood



- Installation boxes for solid or hybrid timber constructions whose panel thickness is > 40 mm
- Fastening using TC claws, which anchor themselves in the wood
- Robust housing
- Airtight thanks to 2-component membrane technology
- Easy to install, due to tool-free cable and pipe entry
- Integrated cable retention for NYM cables
- Cost-effective, standard-compliant solution for solid timber, cross-laminated timber and hybrid construction
- Simple and quick assembly



1 TC fastening technology

The patented TC system anchors itself in the wood using a metal claw and is therefore stable and secure.



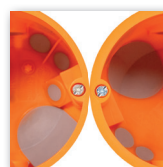
2 Problem with HW sockets

In solid or hybrid wood buildings where the panel thickness is more than 40 mm, conventional installation boxes for hollow wall installation cannot be installed or fastened.



3 Labelled entries

The rear-mounted labelling allows easy and correct allocation of suitable pipe and cable entries.



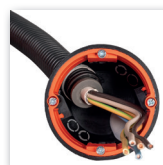
4 High stability

The higher material thickness of the TC installation boxes guarantees stability and durability.



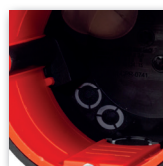
5 Tool-free insertions

Due to the 2K membrane, tool-free pipe and cable insertion is made possible, which simplifies assembly and enables a time saving of up to 60%.



6 Energy efficiency

The airtight membrane prevents unwanted draughts in hollow walls and thus increases energy efficiency in buildings. Optionally in combination with sealing plugs.



7 Smoke containment

In the event of a fire, the airtight construction reliably prevents the spread of smoke in the building before the actual fire protection function is triggered due to temperature.



Type	E3700TC	E3700TCHF
Version	Device connection socket for timber construction	Device connection socket for timber construction, halogenfree
Item no.	7360072	7360073
Diameter	Ø 68 mm	Ø 68 mm
Panel thickness	≥ 10mm	≥ 10mm
Depth	62 mm	62 mm



Documents & more information



Type	BS2000TC	BS2700TC	BS3500TC	BS3700TC
Version	Fire protection device socket for timber construction	Fire protection device socket for timber construction	Fire protection device connection socket for timber construction	Fire protection device connection socket for timber construction
Item no.	7500065	7500062	7500064	7500063
Diameter	Ø 68 mm	Ø 68 mm	Ø 68 mm	Ø 68 mm
Panel thickness	≥ 10 mm	≥ 10 mm	≥ 10 mm	≥ 10 mm
Depth	50 mm	50 mm	62 mm	62 mm
Entries	Pipe entries	Cable and pipe entries	Pipe entries	Cable and pipe entries



Documents & more information





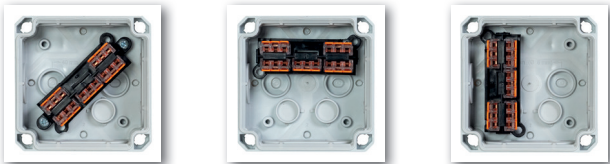
Clamp holder

for wet area distribution boxes

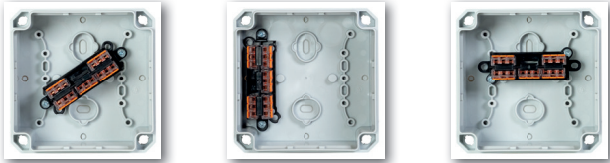
- Simple bearing fixation of the clamps
- Neat and tidy appearance
- Creates plenty of wiring space
- Flexible mounting options for different areas of application

Application options NCKH4

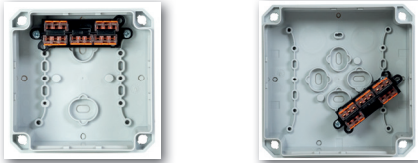
in NFK08



in NFK11

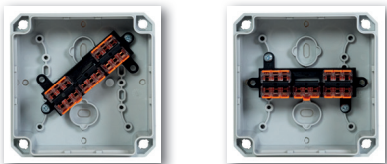


in NFK14

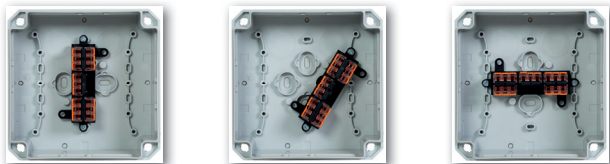


Application options NCKH6

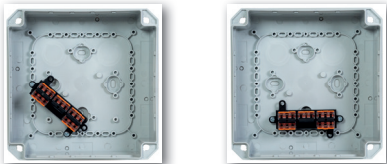
in NFK11



in NFK14



in NFK18



Type	NCKH4	NCKH6
Version	Clamp holder	Clamp holder
Item no.	7390147	7390148
SU / CB / PL	5 / 250 / -	5 / 250 / -
geeignet für	WAGO connection clamps 4 mm²	WAGO connection clamps 6 mm²
Suitable for	NFK08, NFK11 and NFK14 variants	NFK11, NFK14 and NFK18 variants

Customize now!

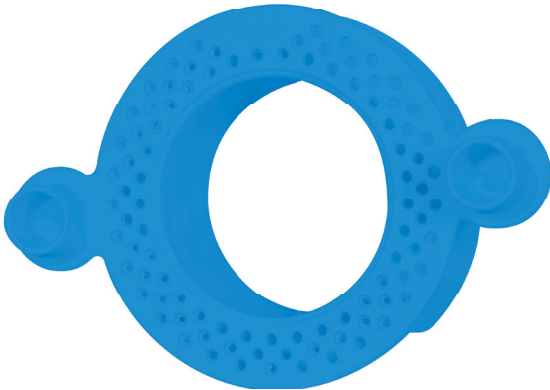
Printed NEPTUN Compact

Use your electrical installation as an advertising medium and draw attention to yourself. You can use the printing from as little as 20 pieces and at attractive quantity discounts.



Thermofix Installation sleeve

Secure hold in insulated facades



- For installing devices and lights in insulated external facades without loss of insulation
- Quick installation by simply screwing in
- Ø 74mm diameter
- Thermal bridge-free installation
- Can be combined with all **f-tronic®** hollow wall boxes Ø 68 mm



1 Easy installation

Simple installation by milling out a Ø 74 mm drill hole and then screwing in the Thermofix.



2 Secure grip

Thanks to the large thread, it holds itself in place and enables stable attachment of outdoor installations such as lights. The Thermofix can withstand pull-out forces of up to 25kg.



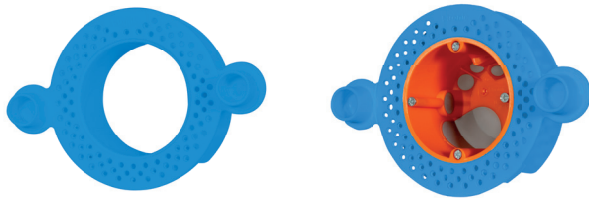
3 Flexible applications

The Thermofix holds in all common insulation materials for external facades and is suitable for many installation applications.



4 Perfectly combined

The cut-out in the Thermofix is perfectly adapted to integrate an **f-tronic®** hollow wall box Ø 68 mm.



Type	TF1	TF1-Set
Version	Installation sleeve	Installation sleeve-set
Item no.	7810051	7810052
SU / CB / PL	5 / - / -	1 / - / -
Diameter	Ø 74 mm	Ø 74 mm
Depth	40 mm	40 mm
Suitable for	All common ETICS materials	All common ETICS materials
Suitable for	HW boxes Ø 68mm	-
Material	PC	PC
Kit contents	-	5x Thermofix Installation sleeve TF1, 5x HW Device-connection socket airtight E3700

Modern technology

Made for the future

- Uncomplicated distribution on walls
- For simple wall surface mounting
- Supplied with plug-in or screw terminals
- 1 to 4 row versions available



1 Simple lock

The screw plugs can be opened and closed with a simple quarter turn.



2 Space and order

The extended wiring space in all areas of the distribution board ensures organisation and safety and enables convenient installation.



3 Diverse entry possibilities

Various prefabricated openings make it easy to insert cables and pipes.



4 Well-labelled

Labelling option for simple marking and labelling, makes it easier to assign the installed components.



5 Cable clamp holder

The cable clip holders ensure even more organisation in the installation.



Type	VISION12+2	VISION24+4	VISION36+6	VISION48+8	VISION36K	VISION48K
Version	1-row	2-row	3-row	4-row	3-row	4-row
Item no.	7220207	7220209	7220211	7220213	7220215	7220216

Type	VISION12+2ST	VISION24+4ST	VISION36+6ST	VISION48+8ST
Version	1-row	2-row	3-row	4-row
Item no.	7220208	7220210	7220212	7220214

DC Surge protection for your PV installation



- To protect the inverter and other devices on the DC side of the PV installation
- Compact design
- Ready-to-connect system
- Surge arrester T1+2 / T2



1 Compact design

Boxes in compact design for up to 3 MPPT.



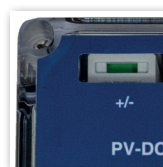
2 Ready for connection with push-in terminals

Quick installation with push-in terminal system and IP65 plug-in seal or...



3 Ready for connection with MC4

... standardised MC4 connector system for easy installation with protection class IP67.



4 Surge arrester type 1+2 / type 2

Arresters for various building types and applications. Viewing window for displaying the arrester status.

PV-DC Box T1+2 with MC4

Type	DCT17YMC	DCT15YMC	DCT13YMC
Version	PV-DCBOX-T1/2 1100V-3MPP	PV-DCBOX-T1/2 1100V-2MPP	PV-DCBOX-T1/2 1100V-1MPP
Item no.	7720001	7720002	7720003
SU / CB / PL	1 / 14 / 224	1 / 20 / 240	1 / 20 / 240
H x W x D	190 x 225 x 91 mm	160 x 156 x 93 mm	160 x 156 x 93 mm
Connection type	MC4	MC4	MC4
Number of MPPT	3	2	1
DC-protection	Type 1/2	Type 1/2	Type 1/2
Protection class	IP67	IP67	IP67

PV-DC Box T1+2 with plug-in seal

Type	DCT17YED	DCT15YED	DCT13YED
Version	PV-DCBOX-T1/2 1100V-3MPP ED	PV-DCBOX-T1/2 1100V-2MPP ED	PV-DCBOX-T1/2 1100V-1MPP ED
Item no.	7720004	7720005	7720006
SU / CB / PL	1 / 14 / 224	1 / 14 / 224	1 / 20 / 240
H x W x D	180 x 225 x 91 mm	180 x 225 x 91 mm	160 x 145 x 91 mm
Connection type	Plug-in seal	Plug-in seal	Plug-in seal
Number of MPPT	3	2	1
DC-protection	Type 1/2	Type 1/2	Type 1/2
Protection class	IP65	IP65	IP65

PV-DC Box T2 with MC4

Type	DCT27YMC	DCT25YMC	DCT23YMC
Version	PV-DCBOX-T2 1100V-3MPP	PV-DCBOX-T2 1100V-2MPP	PV-DCBOX-T2 1100V-1MPP
Item no.	7720007	7720008	7720009
SU / CB / PL	1 / 14 / 224	1 / 20 / 240	1 / 20 / 240
H x W x D	190 x 225 x 91 mm	160 x 156 x 93 mm	160 x 156 x 93 mm
Connection type	MC4	MC4	MC4
Number of MPPT	3	2	1
DC-protection	Type 2	Type 2	Type 2
Protection class	IP67	IP67	IP67

PV-DC Box T2 with plug-in seal

Type	DCT27YED	DCT25YED	DCT23YED
Version	PV-DCBOX-T2 1100V-3MPP ED	PV-DCBOX-T2 1100V-2MPP ED	PV-DCBOX-T2 1100V-1MPP ED
Item no.	7720010	7720011	7720012
SU / CB / PL	1 / 14 / 224	1 / 14 / 224	1 / 20 / 240
H x W x D	180 x 225 x 91 mm	180 x 225 x 91 mm	160 x 145 x 91 mm
Connection type	Plug-in seal	Plug-in seal	Plug-in seal
Number of MPPT	3	2	1
DC-protection	Type 2	Type 2	Type 2
Protection class	IP65	IP65	IP65

The Power Series

The next generation of f-tronic® meter cabinet systems

Flat cover system
Easy to install and quickly lead-sealed



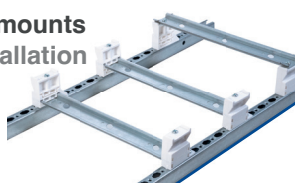
Membrane entrance flange
for tool-free cable and wire entry



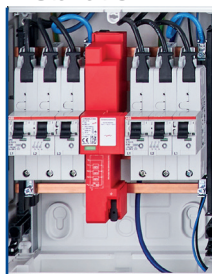
Solid housing
Made entirely of sheet steel



Insulating DIN rail mounts
enable flexible installation
of the devices



Supply side connection compartment
Plenty of space for installation

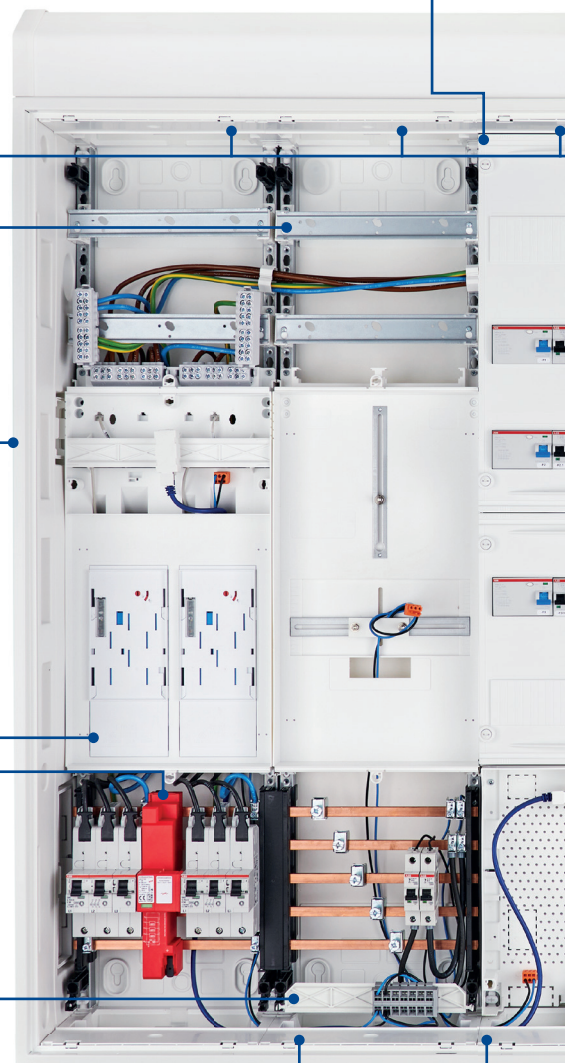


eHZ meter mounting plates
with predefined wiring paths

Additional space in the NAR
for control cable cross-wiring



Cable ducts from field to field
For simple through-wiring



Wall levelling screws
effortlessly aligned



Height-adjustable installation fields
for variable applications



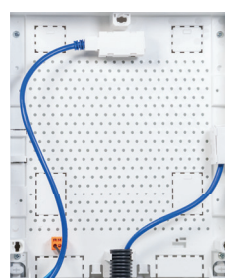
Communication field with
plastic mounting plates
for flexible equipping



NAR and RFZ
Quickly connected



APZ space with
organisation system
for a better layout



Door
Easy to install and align





Range expansion

We now offer you meter exchange plate cabinets for transformer measurements from 200A continuous load. We design these according to customer requirements and specifications. **Please do not hesitate to contact us.**





Do you need specific advice?

Our highly competent team is there for you.

Tel.: +49 6893 9483-0



Find your
contact person

More information at: **www.f-tronic.com**



f-tronic® GmbH
Zum Gerlen 21–25
D-66131 Saarbrücken
Phone +49 6893 9483-0
Fax +49 6893 9483-94
info@f-tronic.de

Brochure as at: 02.2024
Art.Nr.: 1510123
Layout and design
f-tronic® GmbH

Note: We reserve the right to make technical changes to the products and changes to the content of this document at any time without prior notice. In the case of orders, the respective conditions are decisive. **f-tronic**® accepts no responsibility for any errors or incompleteness in this document. We reserve all rights to this document and the objects and illustrations contained therein. Reproduction or exploitation of its contents is prohibited without the prior written consent of **f-tronic**®.

Copyright © 2024 **f-tronic**®
All rights reserved