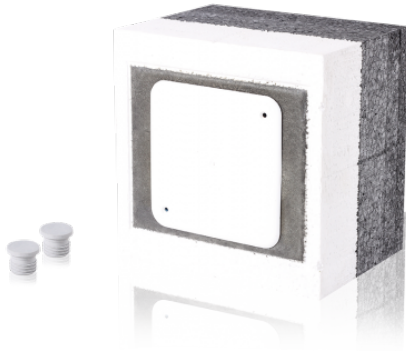


TIE junction box

Order number: 7810016

Type: EPS14-116



Energyefficient and time-saving in processing

- Large time and cost savings
- Quick and easy installation
- No additional sealing and insulation work required
- Multiple fastening options
- With corner element and device carrier to 80kg capacity
- Homogeneous, free of thermal bridges, compact frontage
- High individual and overall stability
- Full integration into the frontage
- No discolouration or condensation on the frontage, no mould or algae

suitable for:

Dimensions

Depth	145 mm
Height	194 mm
Length	104 mm
Width	194 mm

Properties

Colour	Blue
--------	------

Technical features

max. cross section	2,5 mm ²
--------------------	---------------------

Accessories

Equipped with	None
---------------	------